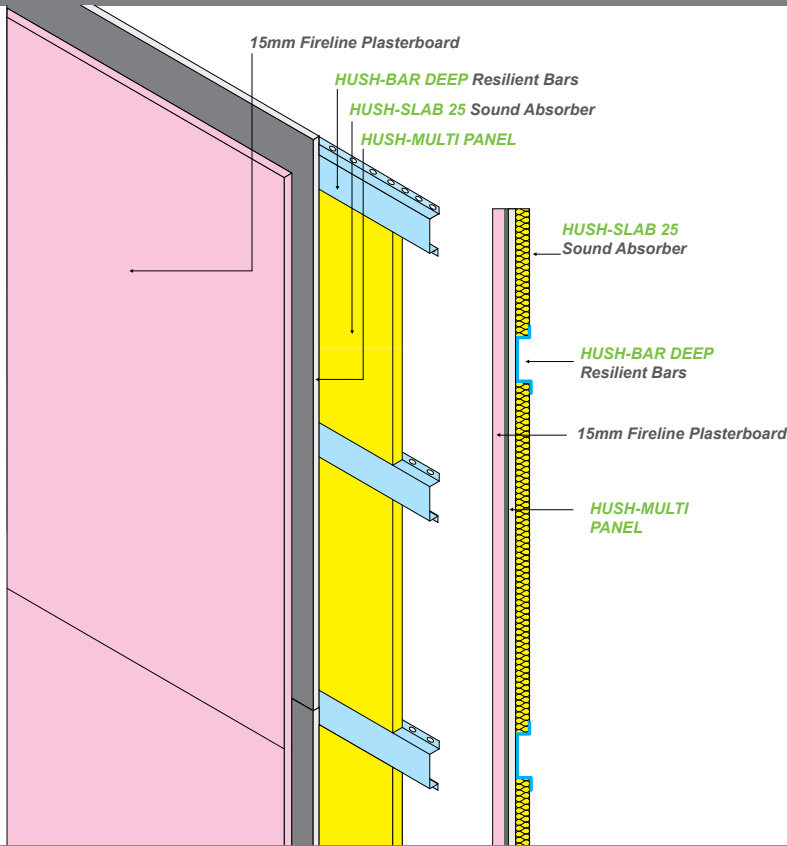




HUSH-WALL LINING SYSTEM



Specification

- 15mm Fireline to be installed over the Hush-Multi panel, ensuring that all joints are staggered. All perimeters are to be sealed using the Hush-Isolation Tape and the Hush acoustic sealant. Both boards to be fixed to the Hush-Deep Resilient Bars.
- Hush-Slab 25 Sound Absorber to be fitted between the Hush-Bars.
- Hush-Bar Deep Resilient Bars fixed horizontally at 450mm centres to the wall.

Features

- ✓ Approved Document E
- ✓ Timber stud, steel stud, brick or block walls
- ✓ High standards of airborne sound reduction
- ✓ Can reduce both flanking and direct sound transmission
- ✓ Minimum loss of space

Acoustic Performance

Airborne $D_{nT,w}$ dB Airborne $D_{nT,w} + C_{tr}$ dB
 58 48

Results based on 100mm timber stud wall

Approved Document E

- UK Building Regulations approved Document E 2003 incorporates a unit of measurement to determine low frequency airborne sound transmission.
- Due to proven intrinsic difficulties of measuring low frequency sound, in domestic sized rooms, it must be expected that there could be significant deviations in the accuracy of these measurements. Furthermore, there will be variations from site to site due to structural differences in buildings, general site conditions and workmanship.
- All these factors can influence the repeatability of both impact and airborne acoustic test results. Therefore, any test results must be considered as an indication only and no warranty can be given or implied as to the actual acoustic performance in any particular situation.

HUSH (UK) LIMITED
 44 Canal Street,
 South Sefton,
 Merseyside L20 8QU.

Tel: 0151 933 2026
Fax: 0151 944 1146
Email: info@hush.uk.com
www.hush.uk.com



HUSH ACOUSTICS
 Sound Insulation Products and Systems